

INALA DESKING DIVIDER

Screens » Desking Screens



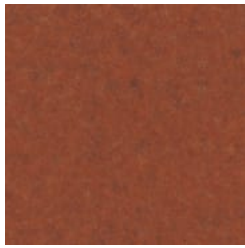
Collection: **Inala**

INALA DESKING DIVIDER

Screens » Desking Screens



BARK - PET



BRICK - PET



CADET - PET



CHAMBRAY - PET



COBALT - PET



ECRU - PET



FOSSIL - PET



FROST - PET



GRASS - PET



GREIGE - PET



IVORY - PET



LINEN - PET



MALACHITE - PET



MANDARIN - PET



MIDNIGHT - PET



OCHRE - PET



OLIVE - PET



PEBBLE - PET



PEWTER - PET



SKY - PET



SLATE - PET



SMOKE - PET



SUNSHINE - PET



TAR - PET



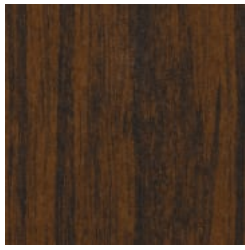
EUCALYPTUS - TIMBER
PET

INALA DESKING DIVIDER

Screens » Desking Screens



IRONBARK - TIMBER
PET



MERBAU - TIMBER PET



SPOTTED GUM -
TIMBER PET



Inala Desking Divider
Premium Material
Raku Jade Detail



Inala Desking Divider
Meadow



Inala Desking Divider
Detail



Inala Desking Divider
Detail 2

INALA DESKING DIVIDER

Screens » Desking Screens

Inala Desking Divider—a game-changer in your quest for focus and privacy. Available in 2 sizes

● **Acoustic**

● **Absorbs Noise**

● **Bleach Cleanable**

● **Easy Clean**

● **Easy Install**

Description

Inala Desking Divider—a game-changer in your quest for focus and privacy. Available in 2 sizes crafted to perfection and a height designed for maximum effectiveness, it's the ultimate addition to your workspace.

Constructed with not one, but two layers of high quality 1/2" high-quality PET, this divider doesn't just create privacy; it fortifies it. Slide it effortlessly over the edge of your desk and secure it with the non-destructive comfort grip knob for a snug fit that won't leave a mark.

Whether you're in the zone or simply seeking solitude, the Inala Desking Divider has got your back. With its seamless integration and double-layer defence against distractions, it's a must-have for any bustling workspace.

So, why settle for a divided attention span when you can have the clarity and focus you deserve? Upgrade to the Inala Desking Divider and take control of your productivity like never before.

Made In

USA

Dimensions

- 23.8" (603mm) w x 23.8" (603.3mm) h x 1" (25mm) D
- 29.8" (756mm) w x 23.8" (603.3mm) h x 1" (25mm) D

INALA DESKING DIVIDER

Screens » Desking Screens

PET Colours

Standard Finishes:

30 Solid Colors: Bark, Brick, Cadet, Chambray, Cobalt, Ecru, Elderberry, Fossil, Frost, Grass, Greige, Ivory, Linen, Malachite, Mandarin, Meadow, Midnight, Ochre, Olive, Parchment, Pebble, Pewter, Saffron, Sky, Slate, Smoke, Storm, Sunshine, Tar, Twilight.

4 Timber Prints: Eucalyptus, Iron bark, Merbau, Spotted Gum.

Premium Finishes:

12 Premium Wood Prints: Australian Walnut, Cherry, Claro Walnut, Euro Beech, Knotty Pine, Lace Wood, Maple, Palm Wood, Poplar, Redwood, Rustic Walnut, White Oak.

18 Premium Material Prints: Concrete Cast, Concrete Polished, Concrete Dark Tint, Raku Bone, Raku Luster, Raku Jade, Shale Light, Shale Medium, Shale Dark, Terracotta Sun Bleached, Terracotta Mission, Terracotta Antique, Terrazzo Light, Terrazzo Medium, Terrazzo Dark, Travertine Light, Travertine Medium, Travertine Dark.

Composition

Density 0.5 lb/ft² 2.4 kg /m²

Sustainability

func. PET panels are made from 100% recyclable materials.

- 60% post-consumer recycled PET bottles.
 - 35% pre-consumer recycled content from PET chips
 - 5% bio-based Polylactic Acid (PLA)
 - Accessories: Steel + PET insert/liner with powder coat finish
-

Fire Rating

ASTM-E84 – Class A classification
AS ISO 9705 – 2003 – Group 1 classification
EN-13501 – B-s2-d0 classification

Warranty

5-year warranty.

Lead Time

4-6 weeks

INALA DESKING DIVIDER

Screens » Desking Screens

Assembly & Delivery Flat pack delivery, minimal assembly required.

See installation instructions for detail.

Suggested Installation Go to Technical Documents and download the Installation Guide for more details.

How to Specify

1. Select Size
2. Select PET Color

Care Instructions Dab func. with a damp clean cloth and mild solution of liquid detergent and warm water. Repeat using only clean water, then pat dry with a lint free cloth.

For difficult stains, use a solution of household bleach (10% bleach / 90% water).

To remove the bleach, repeat using a clean, water dampened cloth, then pat dry.

Always test in an inconspicuous area first and if you don't see the expected results, contact us.

Additional Comments To see how vivid the colors truly are, it's easy to request a sample through the "Request information" button on this page, or you can ask for one from your local sales guru

Inclusions Hardware to suit size selected
