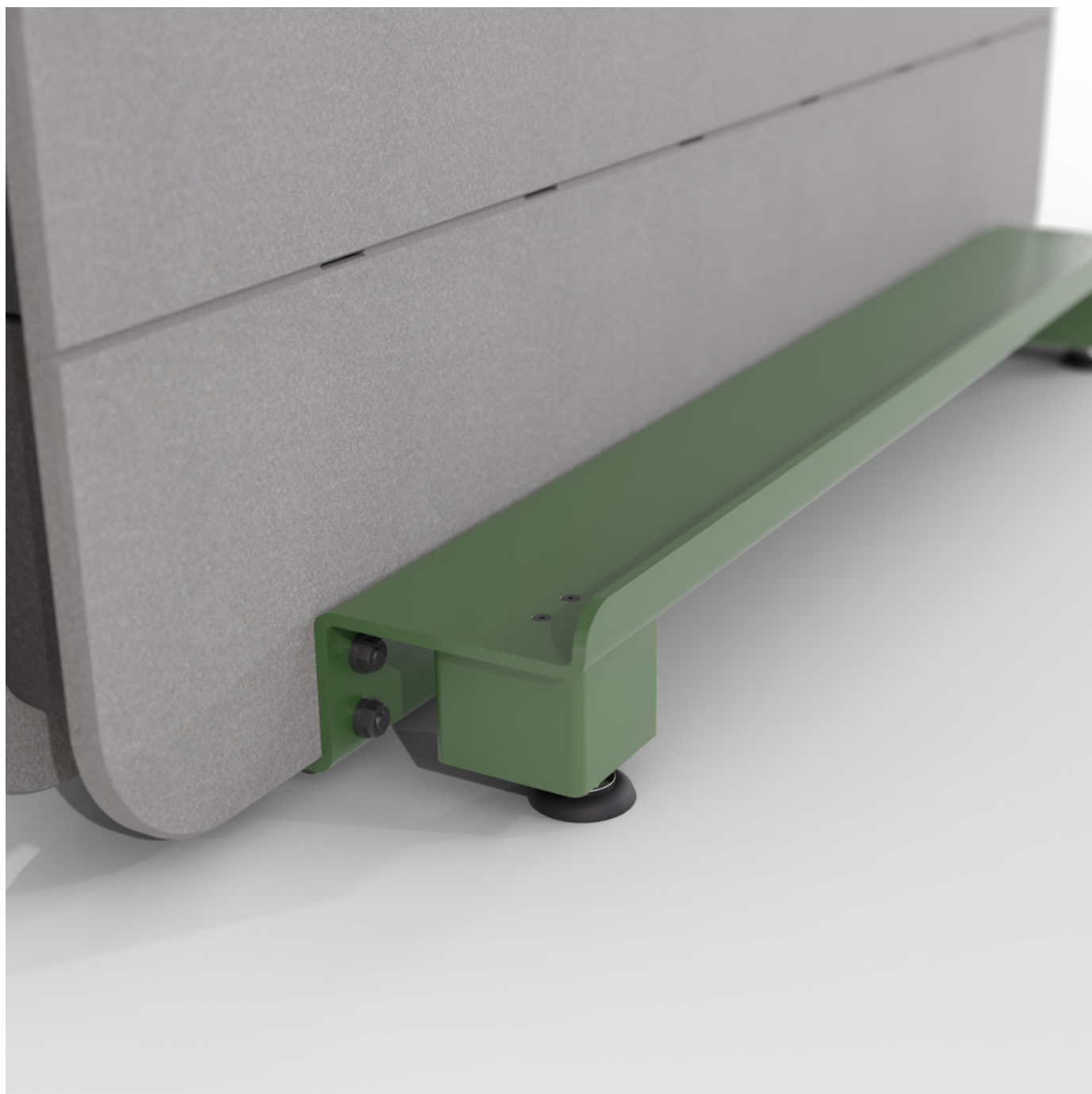


cooee wall adjustable foot

Accessories » Cooee Accessories



Collections: **Cooee**

Applications: **Accessories**

cooee wall adjustable foot

Accessories » Cooee Accessories



cooee wall adjustable foot

Accessories » Cooee Accessories

Cooee Adjustable Foot, the accessory that's about to revolutionize the way you roll.

- ✓ Absorbs Noise
- ✓ Acoustic
- ✓ Bleach Cleanable
- ✓ Easy Clean
- ✓ Easy Install

Description

Now, we know you love the mobility of your Cooee Mobile Wall, but sometimes you need it to chill out and stay in one place. That's where the Cooee Adjustable Foot comes to the rescue, giving you the option for a stationary foot that keeps your wall steady as a rock.

Now, we know you'll have questions, concerns, and late-night ponderings about whether your Cooee Wall can still glide across that plush carpet of yours. Well, fear not! Our Adjustable Foot, or as it's often called in market, the "glides," glides like a champ, effortlessly cruising across any surface, be it carpet or hardwood.

Sold individually, these adjustable feet seamlessly attach using the same holes as the casters. Transform your mobile wall into a rock-solid powerhouse effortlessly. It's like giving your trusty sidekick an unshakable anchor, ensuring it stays put and doesn't go wandering off.

And let's not forget our educational and healthcare heroes out there. It's all about providing rock-solid stability in those fast-paced environments. Whether you're teaching a class, running a meeting, or taking care of patients, the Cooee Adjustable Foot will keep your mobile wall firmly grounded, so you can focus on what really matters.

Composition Density 0.5 lb/ft² 2.4 kg /m²

Material Steel + Powder coat finish
Plastic adjustable foot

Powder Coat Anodized Silver, Bengal White, Denim, Fern, Gunmetal, LT Grey, Marigold, Matte Black, Spice, Tango, Teal, Terracotta

Dimensions 3" (76mm) w x 3" (76mm) h x 3" (76mm) d

Fire Rating ASTM-E84 – Class A classification
AS ISO 9705 – 2003 – Group 1 classification
EN-13501 – B-s2-d0 classification

cooee wall adjustable foot

Accessories » Cooee Accessories

Made In USA

Lead Time 6-8 weeks

Inclusions 1 Powder coated Adjustable Foot

Assembly & Delivery Flat pack delivery, minimal assembly required.
See installation instructions for detail.

Care Instructions Dab func. with a damp clean cloth and mild solution of liquid detergent and warm water. Repeat using only clean water, then pat dry with a lint free cloth.

For difficult stains, use a solution of household bleach (10% bleach / 90% water).

To remove the bleach, repeat using a clean, water dampened cloth, then pat dry.

Always test in an inconspicuous area first and if you don't see the expected results, contact us.

Warranty 5-year warranty.

Additional Comments To see how vivid the colors truly are, it's easy to request a sample through the "Request information" button on this page, or you can ask for one from your local sales guru

How to Specify

1. Select Powder coat color
2. Select Quantity (sold as set of 4)

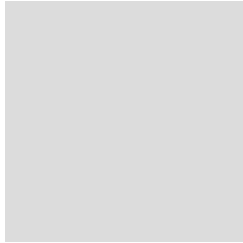
cooee wall adjustable foot

Accessories » Cooee Accessories

Colour & Finish Options



ANODISED SILVER -
POWDER COAT



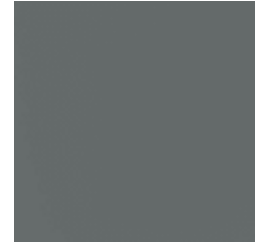
BENGAL WHITE -
POWDER COAT



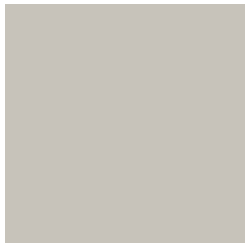
DENIM - POWDER
COAT



FERN - POWDER COAT



GUNMETAL - POWDER
COAT



LT GREY - POWDER
COAT



MARIGOLD - POWDER
COAT



MATTE BLACK -
POWDER COAT



SPICE - POWDER COAT



TANGO - POWDER
COAT



TEAL - POWDER COAT

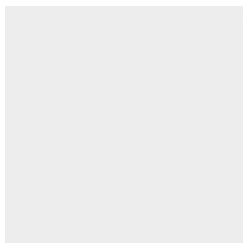


TERRACOTTA -
POWDER COAT

func powdercoat



anodized silver



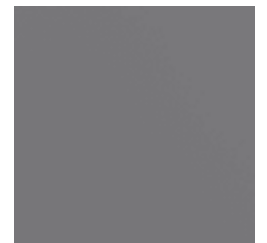
bengal white



denim



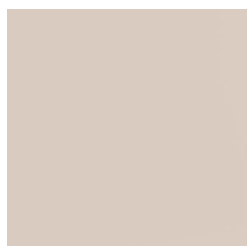
fern



gunmetal

cooee wall adjustable foot

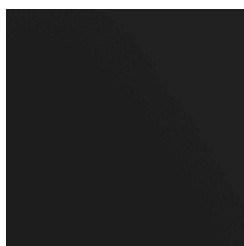
Accessories » Cooee Accessories



light grey



marigold



matte black



spice



tango



teal



terracotta