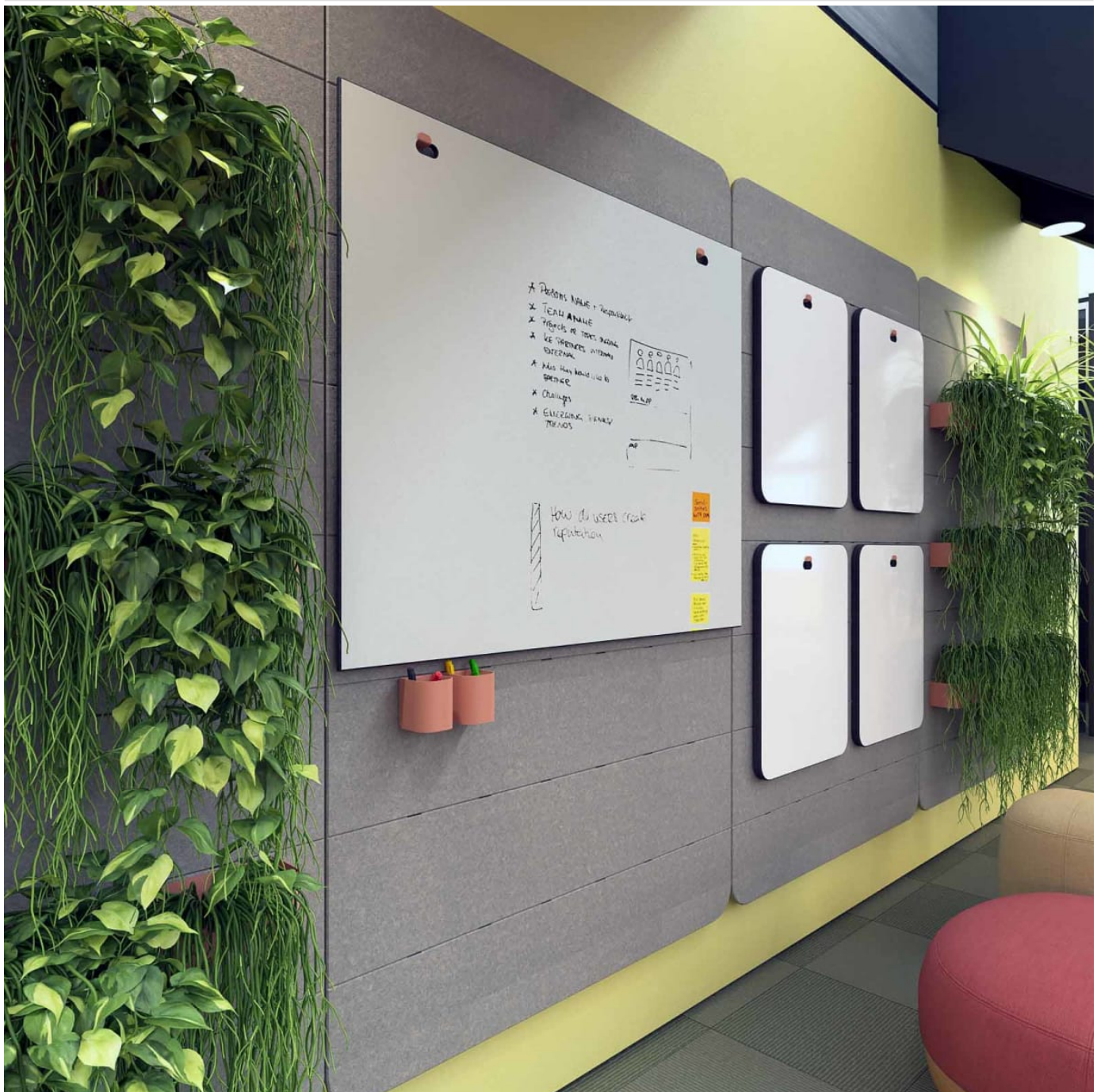


# COOEE FIXED WALL

Walls » Fixed Walls



Collection: **Cooe**

# COOEE FIXED WALL

Walls » Fixed Walls



BARK - PET



BRICK - PET



CADET - PET



CHAMBRAY - PET



COBALT - PET



ECRU - PET



FOSSIL - PET



FROST - PET



GRASS - PET



GREIGE - PET



IVORY - PET



LINEN - PET



MALACHITE - PET



MANDARIN - PET



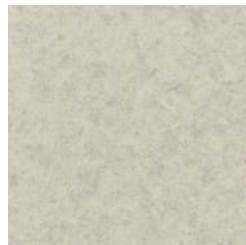
MIDNIGHT - PET



OCHRE - PET



OLIVE - PET



PEBBLE - PET



PEWTER - PET



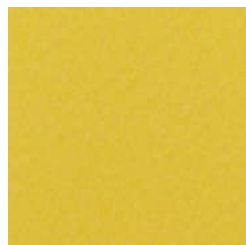
SKY - PET



SLATE - PET



SMOKE - PET



SUNSHINE - PET



TAR - PET



EUCALYPTUS - TIMBER  
PET

# COOEE FIXED WALL

Walls » Fixed Walls



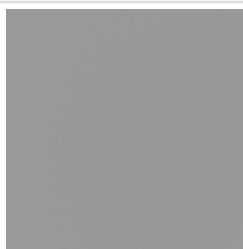
IRONBARK - TIMBER  
PET



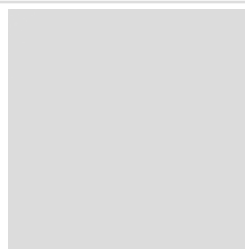
MERBAU - TIMBER PET



SPOTTED GUM -  
TIMBER PET



ANODISED SILVER -  
POWDERCOAT



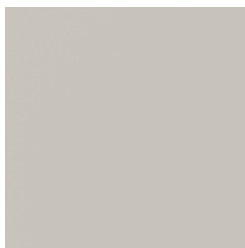
BENGAL WHITE -  
POWDERCOAT



DENIM -  
POWDERCOAT



FERN - POWDERCOAT



LT GREY -  
POWDERCOAT



GUNMETAL -  
POWDERCOAT



MARIGOLD -  
POWDERCOAT



MATTE BLACK -  
POWDERCOAT



SPICE - POWDERCOAT



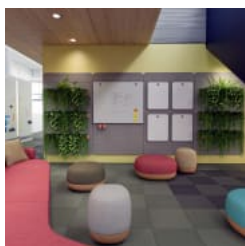
TANGO -  
POWDERCOAT



TEAL - POWDERCOAT



TERRACOTTA -  
POWDERCOAT



# COOEE FIXED WALL

Walls » Fixed Walls

Cooee Fixed Wall - the odd wall out but still fun and funky, just not so mobile. Turn a boring old wall into a feature wall with loads of function.

- Absorbs Noise
- Bleach Cleanable
- Easy Install
- Acoustic
- Easy Clean

## Description

The lightweight design makes it easy to mount onto existing walls with four simple Z clips. It means you can turn a boring old wall into a funky feature wall with a bucket load of function.

It shares the same lightweight frame as the mobile walls, to increase mounting locations, while superior noise reduction is achieved when the sustainable, sound absorbing PET converts sound energy into heat. Adding wall accessories is the perfect way to personalize and add storage to an existing room.

It adds form and function to existing spaces that may not need a mobile wall.

func., Cooee Walls are easily cleaned with bleach and water.

## Made In

USA

## Dimensions

47.5" (1207mm) w x 78.5" (1994mm) h x 15" (380mm) d

## Powder Coat

Anodized Silver, Bengal White, Denim, Fern, Gunmetal, LT Grey, Marigold, Matte Black, Spice, Tango, Teal, Terracotta.

# COOEE FIXED WALL

Walls » Fixed Walls

---

## PET Colours

### Standard Finishes:

30 Solid Colors: Bark, Brick, Cadet, Chambray, Cobalt, Ecru, Elderberry, Fossil, Frost, Grass, Greige, Ivory, Linen, Malachite, Mandarin, Meadow, Midnight, Ochre, Olive, Parchment, Pebble, Pewter, Saffron, Sky, Slate, Smoke, Storm, Sunshine, Tar, Twilight.

**4 Timber Prints:** Eucalyptus, Iron bark, Merbau, Spotted Gum.

### Premium Finishes:

**12 Premium Wood Prints:** Australian Walnut, Cherry, Claro Walnut, Euro Beech, Knotty Pine, Lace Wood, Maple, Palm Wood, Poplar, Redwood, Rustic Walnut, White Oak.

**18 Premium Material Prints:** Concrete Cast, Concrete Polished, Concrete Dark Tint, Raku Bone, Raku Luster, Raku Jade, Shale Light, Shale Medium, Shale Dark, Terracotta Sun Bleached, Terracotta Mission, Terracotta Antique, Terrazzo Light, Terrazzo Medium, Terrazzo Dark, Travertine Light, Travertine Medium, Travertine Dark.

---

## Composition

Density 0.5 lb/ft<sup>2</sup> 2.4 kg /m<sup>2</sup>

---

## Material

- 60% post-consumer recycled PET bottles.
- 35% pre-consumer recycled content from PET chips
- 5% bio-based Polylactic Acid (PLA)

Accessories: Steel + PET insert/liner with powder coat finish

---

## Fire Rating

ASTM-E84 – Class A classification  
AS ISO 9705 – 2003 – Group 1 classification  
EN-13501 – B-s2-d0 classification

---

## Warranty

5-year warranty.

---

## Lead Time

6–8 weeks

---

## Assembly & Delivery

Flat pack delivery, minimal assembly required.

See installation instructions for detail.

---

# COOEE FIXED WALL

Walls » Fixed Walls

---

## How to Specify

- Select 1 x PET Color
  - Select 1 x Powder Coat Finish
  - Refer Product Specification Guide
- 

## Care Instructions

Dab func. with a damp clean cloth and mild solution of liquid detergent and warm water. Repeat using only clean water, then pat dry with a lint free cloth.

For difficult stains, use a solution of household bleach (10% bleach / 90% water).

To remove the bleach, repeat using a clean, water dampened cloth, then pat dry.

Always test in an inconspicuous area first and if you don't see the expected results, contact us.

---

## Additional Comments

To see how vivid the colors truly are, it's easy to request a sample through the "Request information" button on this page, or you can ask for one from your local sales guru.

---

## Inclusions

Fixed wall with 2 hooks and 4x z-clips (split battens) for mounting

---