

# COOEE LOUVER WALL

Walls » Mobile Walls



Collection: **Cooee**

# COOEE LOUVER WALL

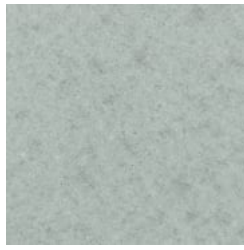
Walls » Mobile Walls



BARK - PET



BRICK - PET



CADET - PET



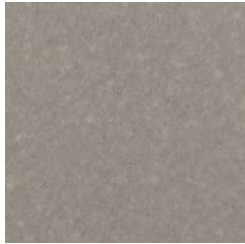
CHAMBRAY - PET



COBALT - PET



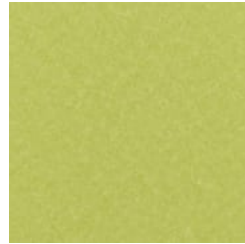
ECRU - PET



FOSSIL - PET



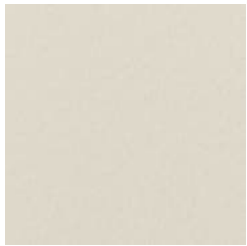
FROST - PET



GRASS - PET



GREIGE - PET



IVORY - PET



LINEN - PET



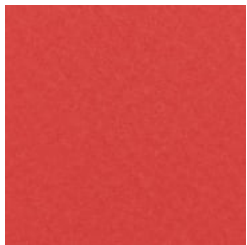
MALACHITE - PET



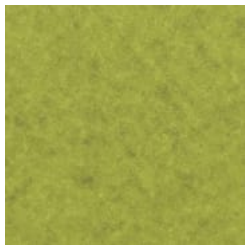
MANDARIN - PET



MIDNIGHT - PET



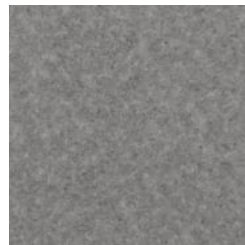
OCHRE - PET



OLIVE - PET



PEBBLE - PET



PEWTER - PET



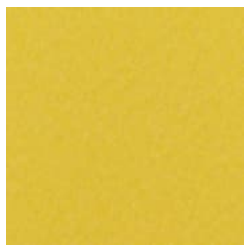
SKY - PET



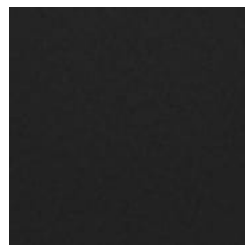
SLATE - PET



SMOKE - PET



SUNSHINE - PET



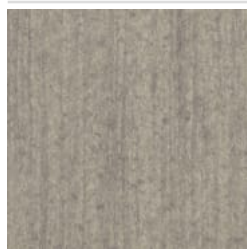
TAR - PET



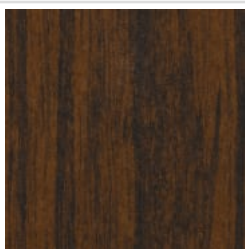
EUCALYPTUS - TIMBER  
PET

# COOEE LOUVER WALL

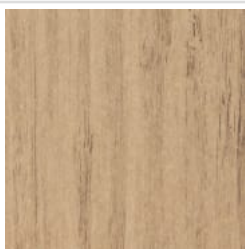
Walls » Mobile Walls



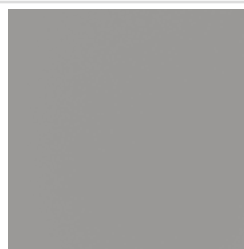
IRONBARK - TIMBER  
PET



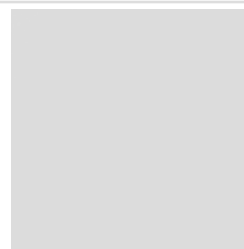
MERBAU - TIMBER PET



SPOTTED GUM -  
TIMBER PET



ANODISED SILVER -  
POWDERCOAT



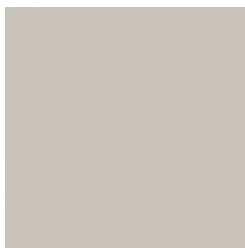
BENGAL WHITE -  
POWDERCOAT



DENIM -  
POWDERCOAT



FERN - POWDERCOAT



LT GREY -  
POWDERCOAT



GUNMETAL -  
POWDERCOAT



MARIGOLD -  
POWDERCOAT



MATTE BLACK -  
POWDERCOAT



SPICE - POWDERCOAT



TANGO -  
POWDERCOAT



TEAL - POWDERCOAT



TERRACOTTA -  
POWDERCOAT



# COOEE LOUVER WALL

Walls » Mobile Walls

Cooee Louver Wall lets you balance light and sound. The easy to operate louvers let light into interior spaces when you need it.

- Absorbs Noise
- Bleach Cleanable
- Easy Install
- Acoustic
- Easy Clean

## Description

Easy to operate louvers let light into interior spaces when you need it. The good news is that there are still grooves around the edges to add storage with attach Wall Hooks and Wall Cups.

Its lightweight internal frame is complemented by a steel base and lockable casters, so that its strong, stable, and maneuverable. Superior noise reduction is achieved when the sustainable, sound absorbing PET converts sound energy into heat.

This wall gives the best of both worlds.

func., Cooee Walls are easily cleaned with bleach and water

## Made In

USA

## Dimensions

47.5" (1207mm) w x 78.5" (1994mm) h x 15" (380mm) d

## Powder Coat

Anodized Silver, Bengal White, Denim, Fern, Gunmetal, LT Grey, Marigold, Matte Black, Spice, Tango, Teal, Terracotta.

# COOEE LOUVER WALL

Walls » Mobile Walls

## PET Colours

### Standard Finishes:

30 Solid Colors: Bark, Brick, Cadet, Chambray, Cobalt, Ecru, Elderberry, Fossil, Frost, Grass, Greige, Ivory, Linen, Malachite, Mandarin, Meadow, Midnight, Ochre, Olive, Parchment, Pebble, Pewter, Saffron, Sky, Slate, Smoke, Storm, Sunshine, Tar, Twilight.

**4 Timber Prints:** Eucalyptus, Iron bark, Merbau, Spotted Gum.

### Premium Finishes:

**12 Premium Wood Prints:** Australian Walnut, Cherry, Claro Walnut, Euro Beech, Knotty Pine, Lace Wood, Maple, Palm Wood, Poplar, Redwood, Rustic Walnut, White Oak.

**18 Premium Material Prints:** Concrete Cast, Concrete Polished, Concrete Dark Tint, Raku Bone, Raku Luster, Raku Jade, Shale Light, Shale Medium, Shale Dark, Terracotta Sun Bleached, Terracotta Mission, Terracotta Antique, Terrazzo Light, Terrazzo Medium, Terrazzo Dark, Travertine Light, Travertine Medium, Travertine Dark.

## Composition

Density 0.5 lb/ft<sup>2</sup> 2.4 kg /m<sup>2</sup>

## Material

- 60% post-consumer recycled PET bottles.
- 35% pre-consumer recycled content from PET chips
- 5% bio-based Polylactic Acid (PLA)

Accessories: Steel + PET insert/liner with powder coat finish

## Fire Rating

ASTM-E84 – Class A classification  
AS ISO 9705 – 2003 – Group 1 classification  
EN-13501 – B-s2-d0 classification

## Warranty

5-year warranty.

## Lead Time

6–8 weeks

## Assembly & Delivery

Flat pack delivery, minimal assembly required.

See installation instructions for detail.

# COOEE LOUVER WALL

Walls » Mobile Walls

---

## How to Specify

- Select 1 x PET Color
  - Select 1 x Powder Coat Finish
  - Refer Product Specification Guide
- 

## Care Instructions

Dab func. with a damp clean cloth and mild solution of liquid detergent and warm water. Repeat using only clean water, then pat dry with a lint free cloth.

For difficult stains, use a solution of household bleach (10% bleach / 90% water).

To remove the bleach, repeat using a clean, water dampened cloth, then pat dry.

Always test in an inconspicuous area first and if you don't see the expected results, contact us.

---

## Additional Comments

To see how vivid the colors truly are, it's easy to request a sample through the "Request information" button on this page, or you can ask for one from your local sales guru.

---

## Inclusions

Mobile wall with 1 cup and 6 rotating louvers

---