

COOEE BIOPHILIA WALL

Walls » Mobile Walls



Collection: **Coöee**

COOEE BIOPHILIA WALL

Walls » Mobile Walls



BARK - PET



BRICK - PET



CADET - PET



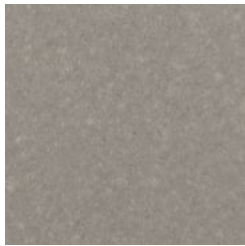
CHAMBRAY - PET



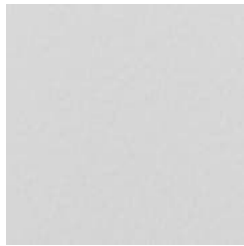
COBALT - PET



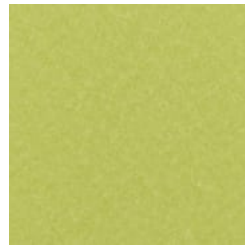
ECRU



FOSSIL - PET



FROST - PET



GRASS - PET



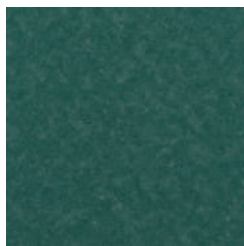
GREIGE - PET



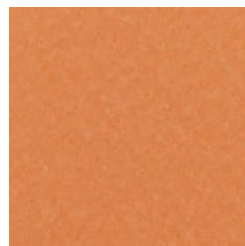
IVORY - PET



LINEN - PET



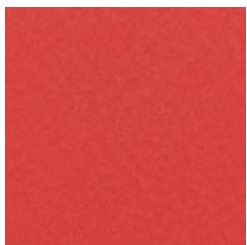
MALACHITE - PET



MANDARIN - PET



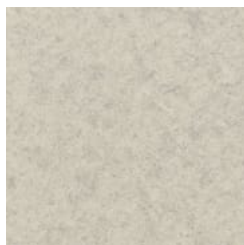
MIDNIGHT - PET



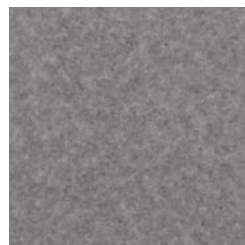
OCHRE - PET



OLIVE - PET



PEBBLE - PET



PEWTER - PET



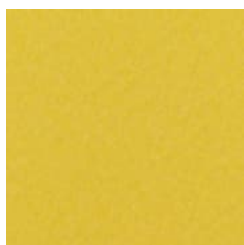
SKY - PET



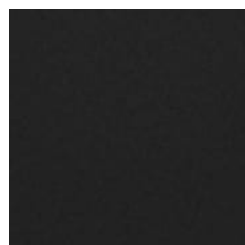
SLATE - PET



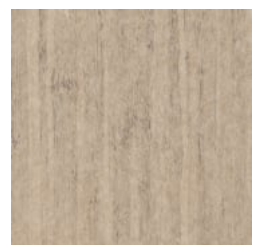
SMOKE - PET



SUNSHINE - PET



TAR - PET



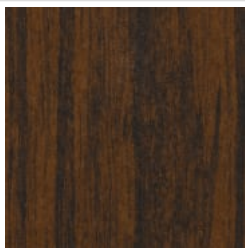
EUCALYPTUS - TIMBER
PET

COOEE BIOPHILIA WALL

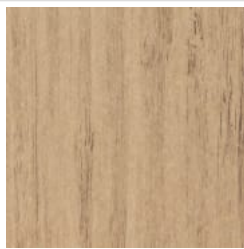
Walls » Mobile Walls



IRONBARK - TIMBER
PET



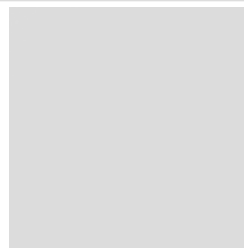
MERBAU - TIMBER PET



SPOTTED GUM -
TIMBER PET



ANODISED SILVER -
POWDERCOAT



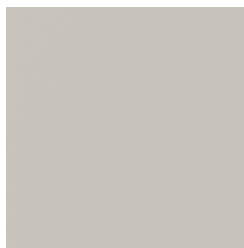
BENGAL WHITE -
POWDERCOAT



DENIM -
POWDERCOAT



FERN - POWDERCOAT



GREY - POWDERCOAT



GUNMETAL -
POWDERCOAT



MARIGOLD -
POWDERCOAT



MATTE BLACK -
POWDERCOAT



SPICE - POWDERCOAT



TANGO -
POWDERCOAT



TEAL - POWDERCOAT



TERRACOTTA -
POWDERCOAT



COOEE BIOPHILIA WALL

Walls » Mobile Walls

Cooee Biophilia Wall - comes with 6 Bins that are perfect for plants. Even in a concrete jungle, remind yourself that Mother Nature isn't far away.

- Absorbs Noise
- Bleach Cleanable
- Easy Install
- Acoustic
- Easy Clean

Description

It's an ideal wall to try out one of our four terrific timber prints. They're also equally good at storing homeless bits and pieces, big or small, from here and there.

Its lightweight internal frame is complemented by a steel base and lockable casters, so that it's strong, stable, and maneuverable. Superior noise reduction is achieved with the combination of sustainable, sound absorbing PET and a noise blocking membrane.

It reminds us that even if we work in a concrete jungle, Mother Nature isn't far away.

func., Cooee Walls are easily cleaned with bleach and water

Made In

USA

Dimensions

47.5" (1207mm) w x 78.5" (1994mm) h x 15" (380mm) d

Powder Coat

Anodized Silver, Bengal White, Denim, Fern, Gunmetal, LT Grey, Marigold, Matte Black, Spice, Tango, Teal, Terracotta.

COOEE BIOPHILIA WALL

Walls » Mobile Walls

PET Colours

Standard Finishes:

30 Solid Colors: Bark, Brick, Cadet, Chambray, Cobalt, Ecru, Elderberry, Fossil, Frost, Grass, Greige, Ivory, Linen, Malachite, Mandarin, Meadow, Midnight, Ochre, Olive, Parchment, Pebble, Pewter, Saffron, Sky, Slate, Smoke, Storm, Sunshine, Tar, Twilight.

4 Timber Prints: Eucalyptus, Iron bark, Merbau, Spotted Gum.

Premium Finishes:

12 Premium Wood Prints: Australian Walnut, Cherry, Claro Walnut, Euro Beech, Knotty Pine, Lace Wood, Maple, Palm Wood, Poplar, Redwood, Rustic Walnut, White Oak.

18 Premium Material Prints: Concrete Cast, Concrete Polished, Concrete Dark Tint, Raku Bone, Raku Luster, Raku Jade, Shale Light, Shale Medium, Shale Dark, Terracotta Sun Bleached, Terracotta Mission, Terracotta Antique, Terrazzo Light, Terrazzo Medium, Terrazzo Dark, Travertine Light, Travertine Medium, Travertine Dark.

Composition

PET Density 0.5 lb/ft² 2.4 kg /m²

Material

- 60% post-consumer recycled PET bottles.
- 35% pre-consumer recycled content from PET chips
- 5% bio-based Polylactic Acid (PLA)

Accessories: Steel + PET insert/liner with powder coat finish

Fire Rating

ASTM-E84 – Class A classification
AS ISO 9705 – 2003 – Group 1 classification
EN-13501 – B-s2-d0 classification

Warranty

5-year warranty.

Lead Time

6–8 weeks

Assembly & Delivery

Flat pack delivery, minimal assembly required.

See installation instructions for detail.

COOEE BIOPHILIA WALL

Walls » Mobile Walls

Supplied As 1 x Mobile wall with 2 cups, 6 large bins

How to Specify

- Select 1 x PET Color
- Select 1 x Powder Coat Finish
- Refer Product Specification Guide

Care Instructions

Dab func. with a damp clean cloth and mild solution of liquid detergent and warm water. Repeat using only clean water, then pat dry with a lint free cloth.

For difficult stains, use a solution of household bleach (10% bleach / 90% water).

To remove the bleach, repeat using a clean, water dampened cloth, then pat dry.

Always test in an inconspicuous area first and if you don't see the expected results, contact us.

Additional Comments

To see how vivid the colors truly are, it's easy to request a sample through the "Request information" button on this page, or you can ask for one from your local sales guru.

Inclusions Mobile wall with 2 cups, 6 bins.
