

MALLEE DESKING SCREEN NO COVER

Screens » Desking Screens



Collection: **Mallee**

MALLEE DESKING SCREEN NO. 02/18

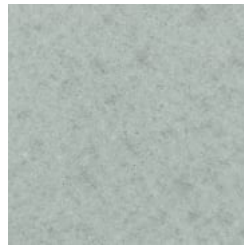
Screens » Desking Screens



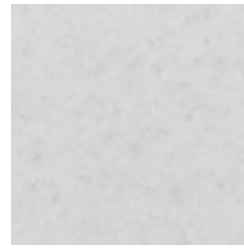
BARK - PET



BRICK - PET



CADET - PET



CHAMBRAY - PET



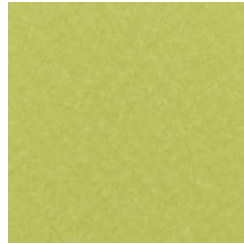
COBALT - PET



ECRU - PET



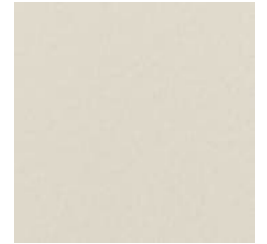
FROST - PET



GRASS - PET



GREIGE - PET



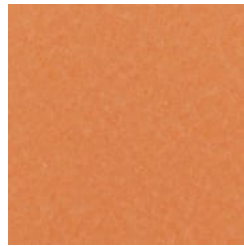
IVORY - PET



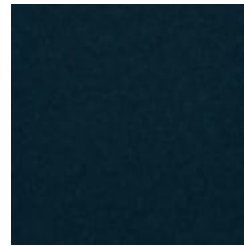
LINEN - PET



MALACHITE - PET



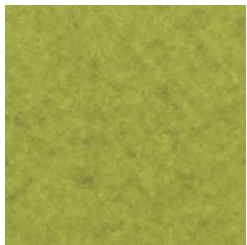
MANDARIN - PET



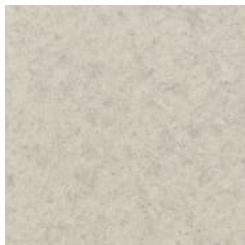
MIDNIGHT - PET



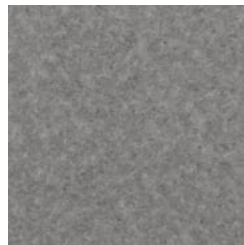
OCHRE - PET



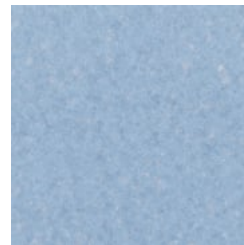
OLIVE - PET



PEBBLE - PET



PEWTER - PET



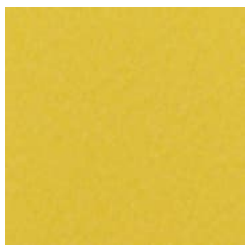
SKY - PET



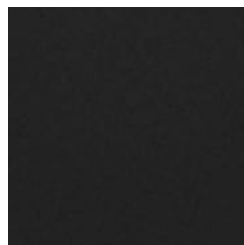
SLATE - PET



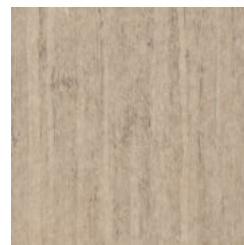
SMOKE - PET



SUNSHINE - PET



TAR - PET



EUCALYPTUS - TIMBER
PET



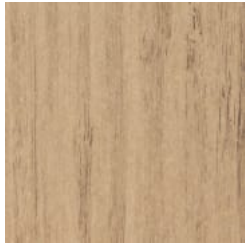
IRONBARK - TIMBER
PET

MALLEE DESKING SCREEN NO GREY

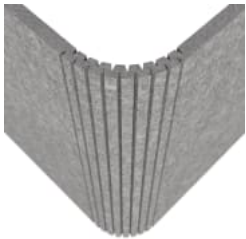
Screens » Desking Screens



MERBAU - TIMBER PET



SPOTTED GUM -
TIMBER PET



MALLEE DESKING SCREEN NO BUBBLES

Screens » Desking Screens

Mallee Desking Screen is the flexible, high-design and acoustically minded screen, that's ideal when you can't sacrifice aesthetics for privacy.

• **Quick Ship**

• **Easy Install**

• **Easy Clean**

• **Acoustic**

Description

The Mallee Desking Screen is the flexible, high-design option when you aren't willing to sacrifice form or function.

The hidden hardware helps the aesthetics and accommodates different worksurface thicknesses, while the kerf cut gives a tight fit on rounded corners. Configuration is made easy with the C and L-shapes designs available in a range of 47"-72" widths, 24" to 30" heights, 24 PET colors and 4 wood prints.

Manufactured in the USA, the Mallee Desking Screen ships quickly, comes flat packed and is simple to assemble.

func., Mallee Desking Screens are easily cleaned with bleach and water.

Made In

USA

MALLEE DESKING SCREEN NO BEVEL

Screens » Desking Screens

Dimensions

Width:

- 47.2" (1200mm)
- 48" (1220mm)
- 55.1" (1401mm)
- 60" (1524mm)
- 63" (1601mm)
- 70.9" (1801mm)
- 72" (1829mm)

Height:

- 15.75" (400mm)
- 23.75" (604mm)
- 32.28" (820mm)

Depth:

- 24" (610mm)
- 30" (762mm)

Powder Coat

White ONLY

MALLEE DESKING SCREEN NO GREY

Screens » Desking Screens

PET Colours

Standard Finishes:

30 Solid Colors: Bark, Brick, Cadet, Chambray, Cobalt, Ecru, Elderberry, Fossil, Frost, Grass, Greige, Ivory, Linen, Malachite, Mandarin, Meadow, Midnight, Ochre, Olive, Parchment, Pebble, Pewter, Saffron, Sky, Slate, Smoke, Storm, Sunshine, Tar, Twilight.

4 Timber Prints: Eucalyptus, Iron bark, Merbau, Spotted Gum.

Premium Finishes:

12 Premium Wood Prints: Australian Walnut, Cherry, Claro Walnut, Euro Beech, Knotty Pine, Lace Wood, Maple, Palm Wood, Poplar, Redwood, Rustic Walnut, White Oak.

18 Premium Material Prints: Concrete Cast, Concrete Polished, Concrete Dark Tint, Raku Bone, Raku Luster, Raku Jade, Shale Light, Shale Medium, Shale Dark, Terracotta Sun Bleached, Terracotta Mission, Terracotta Antique, Terrazzo Light, Terrazzo Medium, Terrazzo Dark, Travertine Light, Travertine Medium, Travertine Dark.

Composition

Density 0.5 lb/ft² 2.4 kg /m²

Material

- 60% post-consumer recycled PET bottles.
- 35% pre-consumer recycled content from PET chips
- 5% bio-based Polylactic Acid (PLA)

Accessories: Steel + PET insert/liner with powder coat finish

Fire Rating

ASTM-E84 – Class A classification
AS ISO 9705 – 2003 – Group 1 classification
EN-13501 – B-s2-d0 classification

Warranty

5-year warranty.

Lead Time

4 weeks

Assembly & Delivery

Flat pack delivery, minimal assembly required.

See installation instructions for detail.

MALLEE DESKING SCREEN NO. 62518

Screens » Desking Screens

How to Specify

- Select 1 x PET Color
 - White Powder Coat Finish Only
 - Select 1 x Wood Finish
 - Select Bracket - C-Clamp OR Blind Mount
 - Select Configuration L-Share or C-Shape
 - Refer Product Specification Guide
-

Care Instructions

Dab func. with a damp clean cloth and mild solution of liquid detergent and warm water. Repeat using only clean water, then pat dry with a lint free cloth.

For difficult stains, use a solution of household bleach (10% bleach / 90% water).

To remove the bleach, repeat using a clean, water dampened cloth, then pat dry.

Always test in an inconspicuous area first and if you don't see the expected results, contact us.

Additional Comments

To see how vivid the colors truly are, it's easy to request a sample through the "Request information" button on this page, or you can ask for one from your local sales guru.

Inclusions

Desk Brackets, PET panel
